

# 10' Popup Backwall

**Congratulations on the purchase of your GeoMetrix Fabric Display.**

## Owner's Manual

Includes:

Parts List

Assembly Instructions

Disassembly Instructions

Storage Instructions

Care Instructions

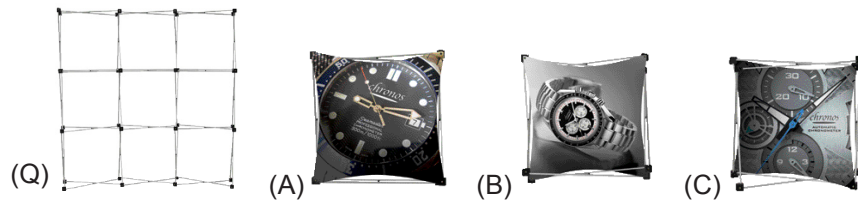
Warranty Information

Please read all of the information carefully and contact your distributor or supplier with any issues.

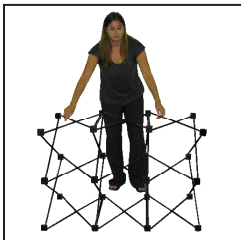


## Parts List

- 9 Quad Frame (Q)
- Graphic Banner (A)
- Graphic Banner (B)
- Graphic Banner (C)

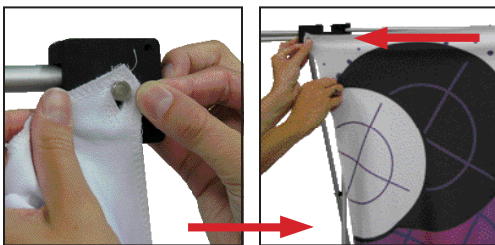


## Assembly Instructions



### Step 1

Remove frame (Q) from case. Standing in front or behind the frame (Q) pull up from the middle of the frame until it expands and extends out fully.



### Step 2

Attach graphic banner to frame (Q) by locating hole slits in each corner of banner (and sides) and securing it around metal pins in frame (Q). Repeat this step for each banner until all banners are secured to frame (Q) in desired locations.

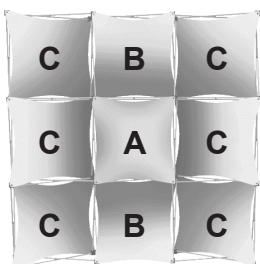
See Step 3 for banner placement specifics.

### Step 3

Banner A attaches to the front of the frame on all four corners.

**Banner B** attaches to the front of the frame with the top two corners and the back of the frame on the bottom two corners. Or this can be reversed with the bottom two corners in the front and the top two corners in the back.

**Banner C** attaches to the front of the frame with the right two corners and the back of the frame with the left two corners. Or this can be reversed with the left two corners in the front and the right two corners in the back.



Banner A

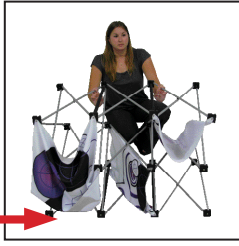


Banner B



Banner C

## Disassembly Instructions



### Step 1

For quick set up and take down you may leave graphic banners on frame (Q). Place hands on frame (Q) and collapse.



### Step 2

Continue to collapse frame (Q) until fully retracted for storage. Make sure that no graphic banners become snagged while collapsing frame (Q).

## Storage Instructions

Store in Carry Case and keep in a cool dry environment. Make sure that all graphic banners are dry before storing.

## Care Instructions

Graphic banners are machine washable. Tumble dry low. Clean frame with damp cloth and wipe dry.

## Warranty Information

All products are designed to provide the user with a cost-effective and durable product. Standard warranty is a 'one year parts and labor' warranty which warrants product against defects in material and workmanship. It does not cover damage due to accidents, abuse, or normal wear and tear. Products found to be defective will be replaced or repaired at factory's discretion.